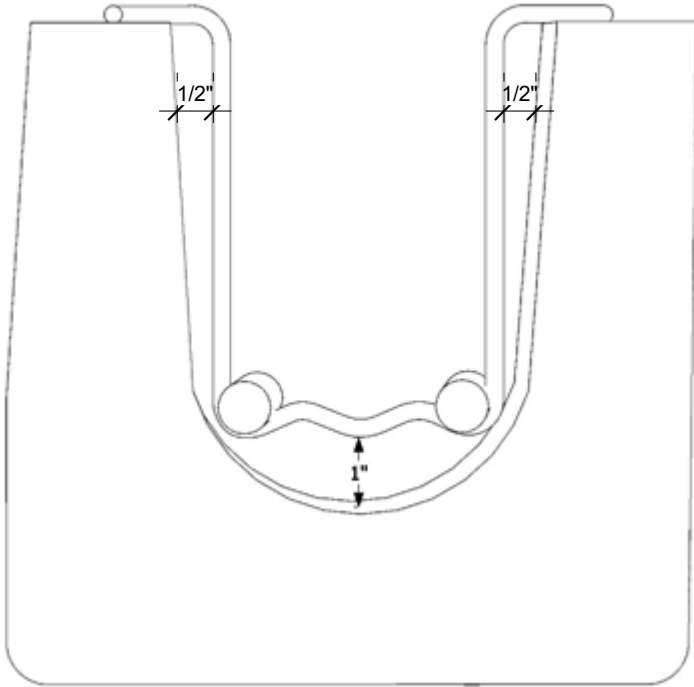




Product Submittal

Bond Beam Rebar Positioner



Maximum strength is obtained by positioning bars in lower 1/3 of lintel.

MATERIAL CONFORMANCE	SIZES / FINISHES
<p>Wire (Carbon Steel): Prefabricated from cold-drawn steel wire conforming to ASTM A1064/A1064M, ASTM A82/ A82M Tensile Strength - 80,000 p.s.i. Yield Point - 70,000 p.s.i. minimum</p> <p>ACI / ASCE 530 (Building Code Requirements for Masonry Structures)</p> <p>Mill Galvanized coating: ASTM A641/A641M (0.1 oz/ft) Hot-Dip Galvanized after fabrication: ASTM A153/A153M-B2 (1.5 oz/ft)</p> <p>Wire (Stainless Steel): ASTM A580/ASTM 580M - AISI Type 304 (Type 316 available on special orders)</p> <div style="display: flex; align-items: center;">  <p>Recycled Content: Mill Galvanized & Fot Dipped, 82.8% Post-Consumer 17% Post Industrial / Pre Consumer</p> <p>Stainless Steel 97% Pre-Consumer V O C Content - 0%</p> </div>	<p>Rebar Positioner Diameter:</p> <p>9ga Standard</p> <p>CMU: 8" 12"</p> <div style="text-align: right; margin-top: 20px;">  </div> <p>FINISHES:</p> <p style="display: flex; justify-content: space-around;"> Mill Galvanized Hot Dip Galvanized Stainless Steel </p>

Masonry Accessories, Inc.
1717 Acme Street, Orlando, FL 32805
407-839-4321 office // 407-839-1933 fax // 800-924-6802 toll free
www.masonaccess.net