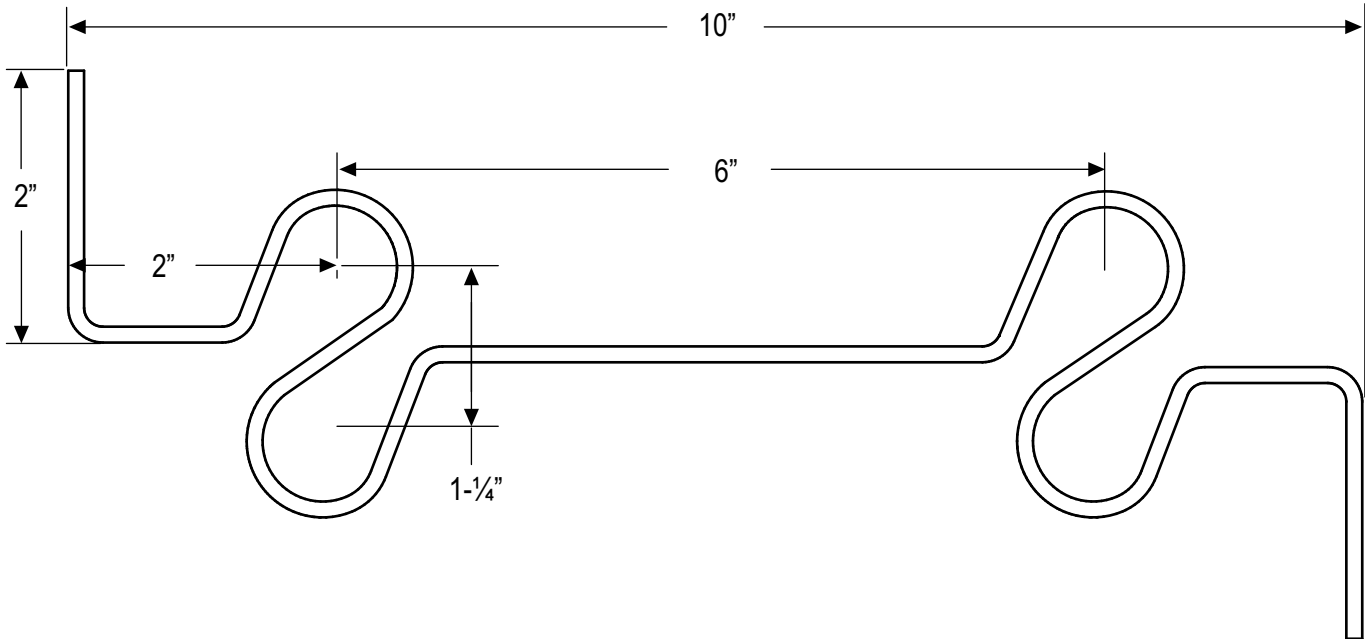


# PRODUCT SUBMITTAL

WIRE-BOND

# 3404 Figure 8 Double Rebar Positioner  
For 12 inch CMU



**Wire (Carbon Steel):** Prefabricated from cold-drawn steel wire conforming to **ASTM A1064/A1064M**  
Tensile Strength - 80,000 psi  
Yield Point - 70,000 psi

Mill Galvanized / Zinc Coating: **ASTM A641 / A641M (0.10 oz per sq ft)** Hot Dip

Galvanized after fabrication / Zinc Coating  
**ASTM A153 / A153M-B2 (1.50 oz per sq ft)**

Stainless Steel (WIRE) **ASTM A580 / ASTM A580M**  
Stainless Steel ( SHEET METAL) **ASTM A167 Type 304**  
(Type 316 available on special order)



**Recycled Content:**  
Mill Galvanized & Hot Dipped,  
82.8% Post-Consumer  
17% Post Industrial / Pre-Consumer,

Stainless Steel,  
60% Post Consumer  
V O C Content - 0%

**# 3404 :** 9 gauge dia. 10 inch for 12 inch CMU

Loops hold up to 1" diameter Rebar

**FINISH:**

Mill Galvanized

Hot Dip Galvanized

Stainless Steel

WIRE-BOND

[www.wirebond.com](http://www.wirebond.com)

Distributed by:  
**MasonAccess.com**  
(800) 924-6802