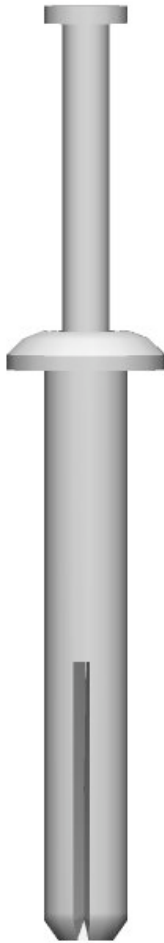


# PRODUCT SUBMITTAL

## Zamac Nail-In Hit Anchor



### DESCRIPTION / INSTALLATION

The Zamac nail-in or Hammer Drive Anchor is a nail drive anchor which has a body formed from Zamac alloy. Nail-In has a low profile mushroom head style. Allows for fast and easy installation. The anchor can be used in concrete, block, brick, or stone and is tamper and corrosive resistant.

To determine the length of metal hit anchors needed, simply add the thickness of the material to be fastened to the minimum embedment. Most metal hit anchors can withstand concrete shear levels up to 884.

#### INSTALLATION:

**Note:** During installation that hole size is equal to anchor diameter. Nail-In can be installed in a number of base materials including concrete, brick, and block. Nail-In performs best when used in light-duty dead loads and is not recommended for use in overhead applications.

- 1) Drill hole using carbide tipped bit. Drill hole 1/4" deeper than expected embedment depth.
- 2) Clean hole of debris.
- 3) Insert Nail-In through fixture in to hole in base material.
- 4) Using a hammer hit the nail into anchor until head is flush with top of anchor.

### SIZES / FINISHES

#### Sizes:

- 1/4" x 1"    
  1/4" x 1-1/4"    
  1/4" x 1-1/2"    
  1/4" x 2"

#### Finishes:

- Zinc Alloy    
  Stainless Steel

