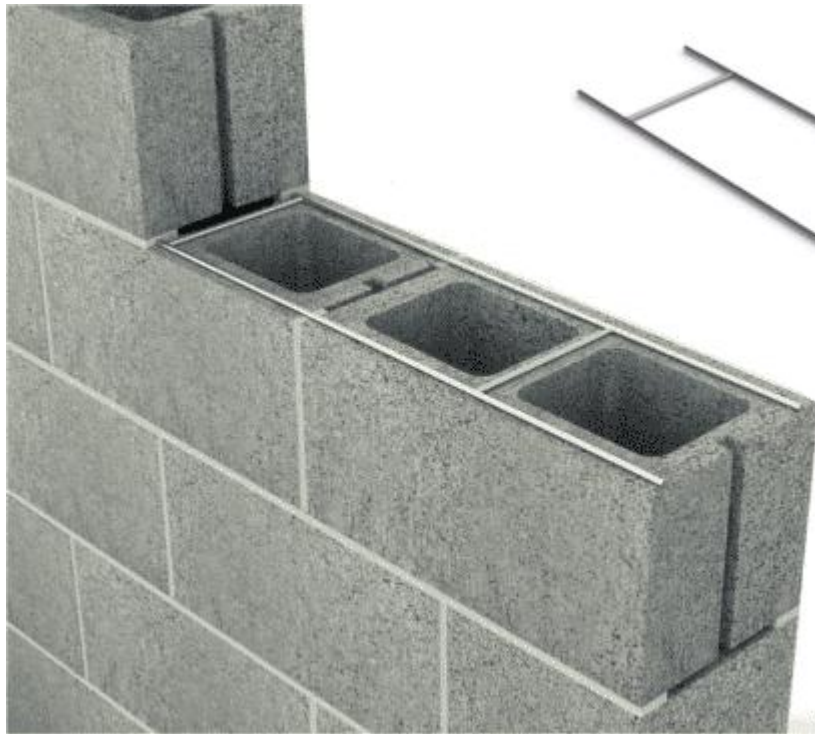


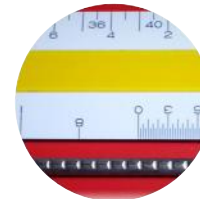
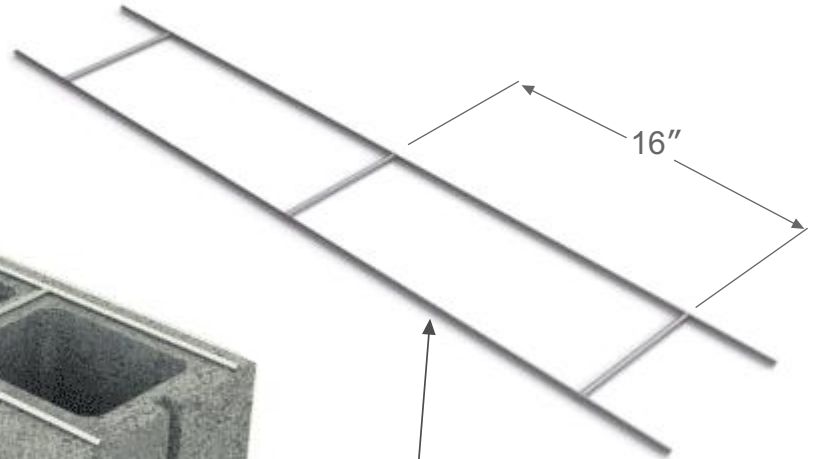
# PRODUCT SUBMITTAL

**WIRE-BOND**


## Series 200 Ladder Mesh ( For Single Wythe Wall)



16" O.C. cross rods allow core clearance.



ASTM A 951  
Deformations  
8 sets/inch

MATERIAL CONFORMANCE	SIZES / FINISHES						
Wire (Carbon Steel): Prefabricated from cold-drawn steel wire conforming to <b>ASTM A1064/A1064M, ASTM A82/ A82M</b>	<b>WIRE SIZE:</b>						
Tensile Strength - 80,000 p.s.i.   Yield Point - 70,000 p.s.i. minimum	Standard		9 Gauge (.148 in)		9 Gauge		<b>CROSS RODS:</b>
<b>ASTM A951/A951M</b> (Standard Specification for Steel Wire for Masonry Joint Reinforcement)	Heavy Duty		3/16 (.187 in)		9 Gauge		9 Gauge
<b>ACI / ASCE 530</b> (Building Code Requirements for Masonry Structures)	Extra Heavy Duty		3/16 (.187 in)		3/16		3/16
Mill Galvanized coating: <b>ASTM A641/A641M (0.1 oz/ft)</b>	10' length standard, custom length available special order)						
Hot-Dip Galvanized after fabrication: <b>ASTM A153/A153M-B2 (1.5 oz/ft)</b>	<b>CMU SIZE:</b>						
Wire (Stainless Steel): <b>ASTM A580/ASTM 580M - AISI</b> Type 304 (Type 316 available on special orders)	4"	6"	8"	10"	12"	14"	16"
	<b>FINISHES:</b>						
<b>Recycled Content:</b> Mill Galvanized & Fot Dipped, 82.8% Post-Consumer 17% Post Industrial / Pre Consumer	Mill Galvanized		Hot Dip Galvanized		Stainless Steel		
<b>Stainless Steel</b> 97% Pre-Consumer V O C Content - 0%							

**WIRE-BOND**

[www.wirebond.com](http://www.wirebond.com)

Distributed by:  
**MasonAccess.com**  
(800) 924-6802