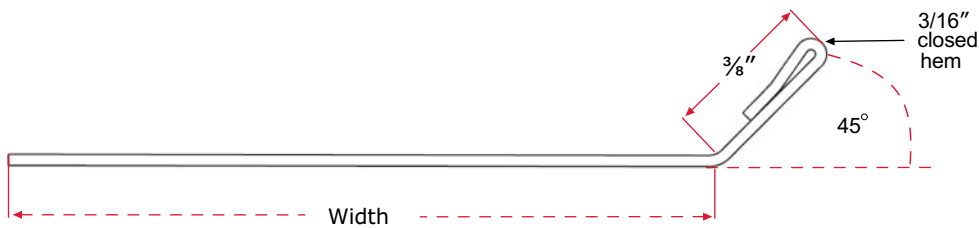
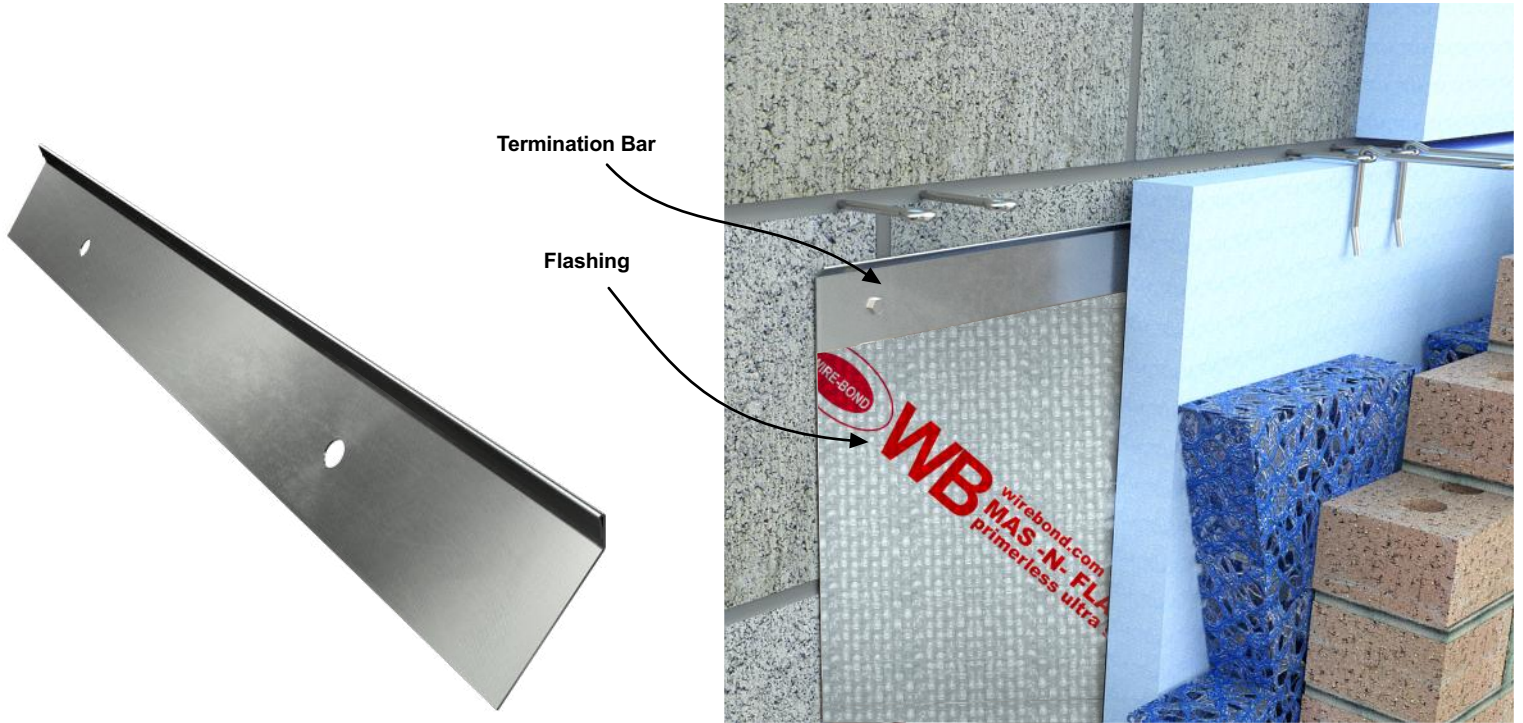



# PRODUCT SUBMITTAL

WIRE-BOND

## # 4210 Stainless Steel Termination Bar



MATERIAL CONFORMANCE	SIZES / FINISHES
<p><b>SHEET METAL:</b></p> <p>Stainless Steel Type 304: ASTM A240/A240M, ASTM 666, ASTM A480/A480M</p> <p><b>Steel Products (flats) Recycled Content:</b></p> <p>Stainless Steel, 60% Post Consumer V O C Content - 0%</p> 	<p><b>#4210 Stainless Steel Termination Bar:</b></p> <p>26 gauge x 1-1/2" wide by 8' sections</p> <p>3/8" 45° lip with a 3/16" closed hem and 5/16" Slotted holes: 8" O.C.</p> <p><b>Finish:</b> Type 304 Stainless Steel</p>

WIRE-BOND

www.wirebond.com

Distributed by:

**MasonAccess.com**

(800) 924-6802