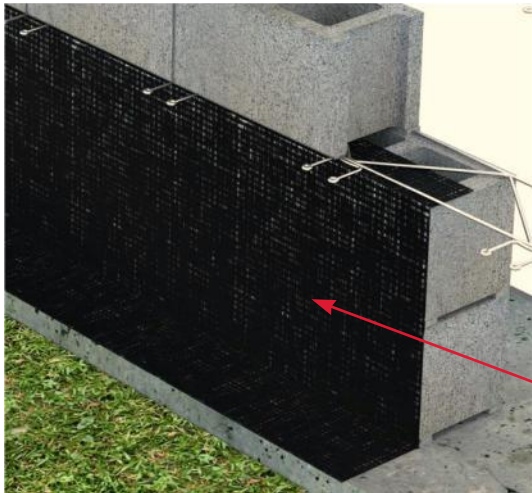
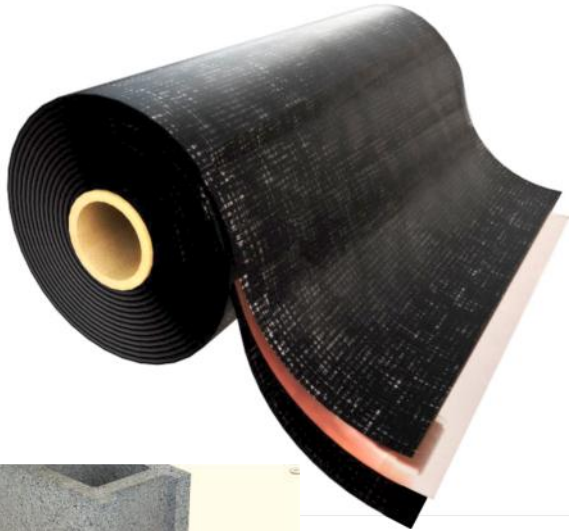


# PRODUCT SUBMITTAL

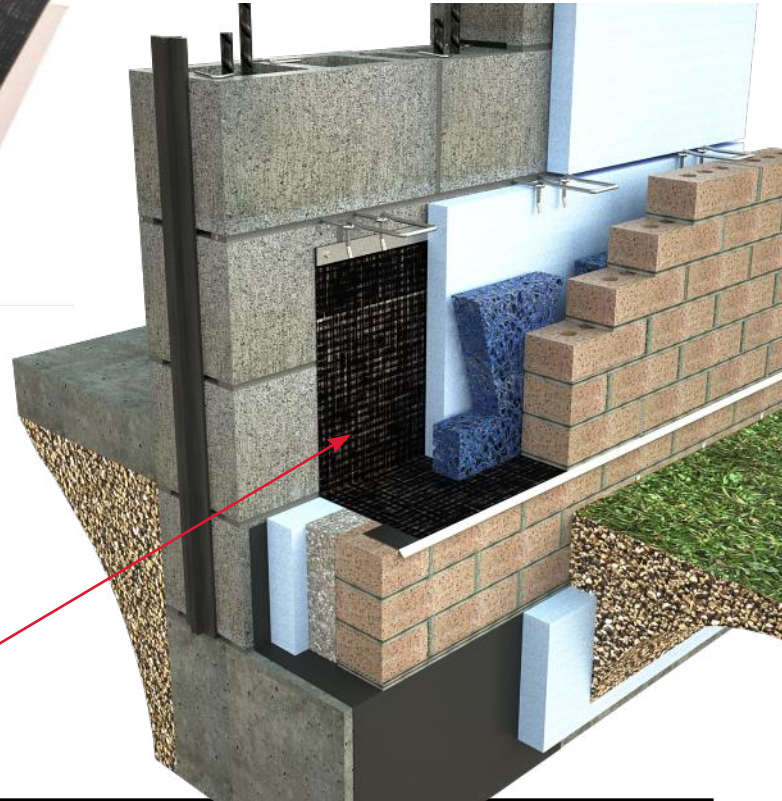
WIRE-BOND

## Copper Fabric Flashing( #4150 )

**Note:** "Flashing must extend beyond the face of the wall or cut flush", Brick Institute of America, Tech Note #7



Copper  
Fabric  
Flashing



### COMPOSITION / MATERIALS

#### Copper Fabric Flashing:

- Highest quality laminated copper flashing.
- Two layers of dense glass fabric and special blended asphalt are laminated to copper core to produce greater tensile strength and improved puncture resistance.
- Composition of copper, glass fabric and asphalt will ensure a permanent bond in the mortar joint and protection from moisture.

Copper Flashing is used in masonry construction because it does not react to any alkali or acids that may be found in mortar.

**Copper sheet used in the  
fabrication of copper laminates  
conforms to ASTM B370 (110 Alloy)**



### WEIGHT / SIZES

#### Copper Weight / sq ft.

☐ 3 oz    ☐ 5 oz    ☐ 7 oz

#### Sizes:

Standard roll widths:

☐ 12"    ☐ 18"    ☐ 24"

Standard roll length: 25 lineal feet.

Custom sizes available

Use WireBond Flashing Mastic when needed to seal all laps and joints.

#### WIRE-BOND :

☐ Flashing Mastic    ☐ Primer

WIRE-BOND

[www.wirebond.com](http://www.wirebond.com)

**MasonAccess.com**  
Masonry Accessories, Inc.  
1-800-924-6802