

# PERM-A-BARRIER® WALL FLASHING

Self-adhesive, rubberized asphalt/polyethylene through-wall flashing for cavity wall applications

## Product Description

Perm-A-Barrier® wall membranes are ideal for protecting the building superstructure from the damaging effects of the elements. By minimizing air and water vapor flow through the building exterior, Perm-A-Barrier wall membranes:

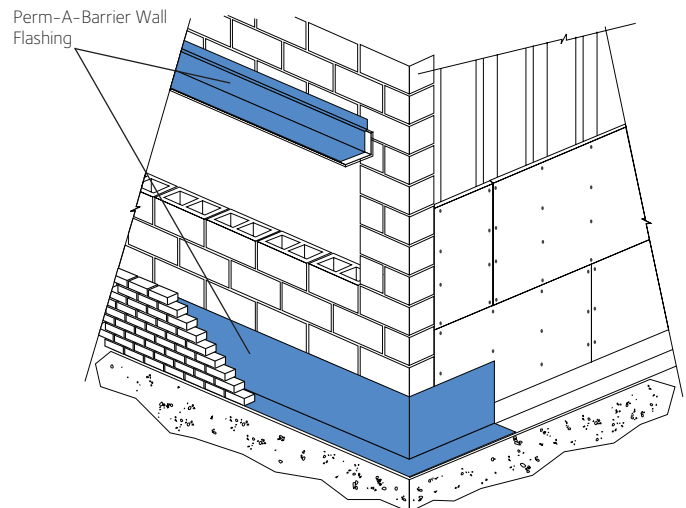
- Prevent premature deterioration of the building envelope
- Enhance thermal performance of the structure and save energy costs
- Improve comfort for the building occupants

## Advantages

- **Fully bonded**—continuous adhesion to the substrate resists wind loads and prevents water tracking behind the tape
- **Waterproof and impermeable to moisture**—impermeable to the passage of liquid water and water vapor
- **Cross laminated film**—provides dimensional stability, high tear strength, puncture and impact resistance
- **Cold applied**—no flame hazard; self-adhesive overlaps ensure continuity
- **Flexible**—accommodates minor settlement and shrinkage movement
- **Controlled thickness**—factory made sheet ensures constant, non-variable site application
- **Aggressive, conformable adhesive**—creates 100% watertight laps and allows self-sealing around mechanical fasteners
- **Unique green color and logo**—highly differentiated on the job site from other flashing types and enables easy identification of damage
- **Ripcord® Split Release on Demand**—faster application in the straight-aways, ease of membrane positioning in detailed areas
- **Foldless release paper**—fewer edge catches, 180° pull-back, ease of membrane cutting (single cuts) and membrane positioning, quicker one-man installs

## Product Advantages

- Fully bonded
- Waterproof and virtually impermeable to moisture
- Cross laminated film
- Cold applied
- Flexible
- Controlled thickness
- Aggressive, conformable adhesive
- Unique green color and logo
- Ripcord Split Release on Demand
- Foldless release paper



Drawings are for illustration purposes only.  
Please refer to [gcpat.com](http://gcpat.com) for specific application details.

## System Components

- **Perm-A-Barrier Wall Flashing—**  
40 mil (1 mm) total thickness self-adhesive, cold applied tape consisting of 32 mils (0.8 mm) of rubberized asphalt integrally bonded to a 8 mil (0.2 mm) high density, cross laminated polyethylene film. The rolls are interwound with disposable silicone-coated release sheet
- **Perm-A-Barrier Primer Plus—**  
water-based vapor permeable primer used to facilitate tenacious adhesion of Perm-A-Barrier self-adhered membranes to the substrate
- **Perm-A-Barrier WB Primer—**  
high tack, water-based primer for use with Perm-A-Barrier Wall Flashing on cementitious and exterior gypsum wallboards
- **Bituthene® Primer B2 LVC—**  
low VOC solvent-based primer for green concrete or damp surfaces
- **S100 Sealant—**  
one part neutral curing, ultra low modulus silicone sealant for sealing penetrations, terminations, brick ties and final terminations.
- **Bituthene® Mastic Trowel Grade—**  
rubberized asphalt mastic for sealing patches, terminations, brick ties, etc.
- **Bituthene Liquid Membrane—**  
two component, trowel grade, asphalt modified urethane for sealing patches, terminations, brick ties, etc.

## Installation

### Safety

Perm-A-Barrier products must be handled properly. Vapors from the mastic and solvent-based primer are harmful and flammable. For these products, the best available information on safe handling, storage, personal protection, health and environmental considerations has been gathered. Refer to product label and SDS (Safety Data Sheet) before use. All users should acquaint themselves with this information prior to working with the material. Carefully read detailed precaution statements on the product labels and SDS before use. SDS can be obtained from our web site at [gcpat.com](http://gcpat.com) or by contacting us toll free at 866-333-3SBM (3726).

### Preparatory Work

Apply Perm-A-Barrier Wall Flashing and accessories only in fair weather when air and surface temperatures are above 25 °F (-4 °C).

Wherever wall flashing is to be applied, the surface must be smooth, clean, dry and free of voids, spalled areas, loose substrate, loose nails, sharp protrusions or other matter that will hinder the adhesion or uniformity of the wall flashing installation. Clean loose dust or dirt from the surface by wiping with a clean dry cloth or a brush.

## Conditioning and Priming

Apply Perm-A-Barrier Primer Plus by air spray, brush or roller or apply Perm-A-Barrier WB Primer by brush or roller. Allow the primer to dry completely before application of the flashing. Drying times may vary depending upon temperature and humidity conditions. Refer to Perm-A-Barrier Primer Plus and Perm-A-Barrier WB Primer product data sheet for installation recommendations and Technical Letter 2, *Substrate Preparation for Application of Perm-A-Barrier Products to Glass-Mat Faced Gypsum Sheathing* for priming requirements on specific glass-mat faced sheathing products.

## Flashing Application

Pre-cut Perm-A-Barrier Wall Flashing to easily handled lengths. Peel release paper from roll to expose rubberized asphalt and carefully position flashing against substrate. Ripcord, a Split Release on Demand feature embedded in the membrane, also makes Perm-A-Barrier Wall Flashing easy to position in detailed areas. Press firmly into place with a steel hand roller or the back of a utility knife as soon as possible, fully adhering the flashing to the substrate to prevent water from migrating under the Perm-A-Barrier Wall Flashing. Form end dams at horizontal flashing terminations to prevent water entry. Overlap adjacent pieces 2 in. (51 mm) and roll overlap with a steel hand roller. Apply a bead of S100 Sealant along all laps, seams, top edges, cuts, penetrations and trowel into place.

When applying Perm-A-Barrier Wall Flashing to Perm-A-Barrier Liquid, VP, VP LT or VPO, apply a bead of S100 or Bituthene Liquid Membrane along all laps, seams, top edges, cuts, penetrations and as shown in GCP detail drawings, and trowel into place. If Perm-A-Barrier Liquid is more than 7 days old, priming may be necessary. Refer to Technical Letter 11 for more information. Lay or trim edges of Perm-A-Barrier Wall Flashing ½ in. (13 mm) back from the face of the masonry. No reglet is necessary when installing Perm-A-Barrier Wall Flashing to vertical surfaces. Complete installation instructions and details are available upon request.

If wrinkles develop, carefully cut out affected area and replace in similar procedure outlined above. The repair piece must be pressed into place with a hand roller as soon as possible to ensure continuous and intimate contact with the substrate.

All non water shedding edges must be sealed with S100 Sealant, Bituthene Liquid Membrane or Bituthene Mastic.

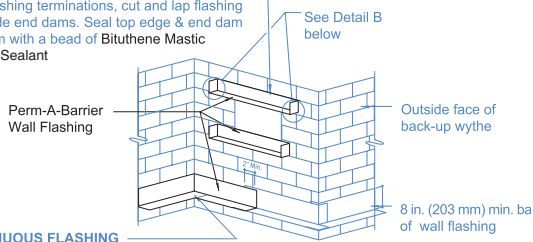
**Protection—**Perm-A-Barrier Wall Flashing must be protected from damage from other trades or construction materials.

## Storage and Handling Information

All materials must be protected from rain and physical damage. Pallets of Perm-A-Barrier Aluminum Flashing must not be double stacked on the job site. Provide cover on top and all sides, allowing for adequate ventilation. Store membrane where temperatures will not exceed 90 °F (32 °C) for extended periods. All products must be stored in a dry area away from high heat, flames or sparks. Store only as much material at point of use as is required for each day's work.

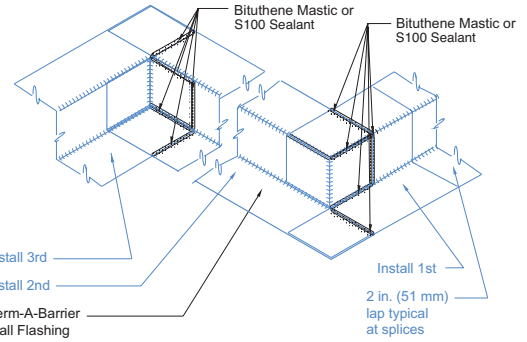
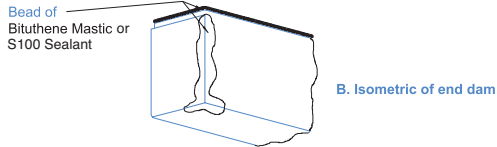
**DISCONTINUOUS FLASHING**

At masonry opening head & sill flashing and at other flashing terminations, cut and lap flashing to provide end dams. Seal top edge & end dam lap seam with a bead of Bituthene Mastic or S100 Sealant

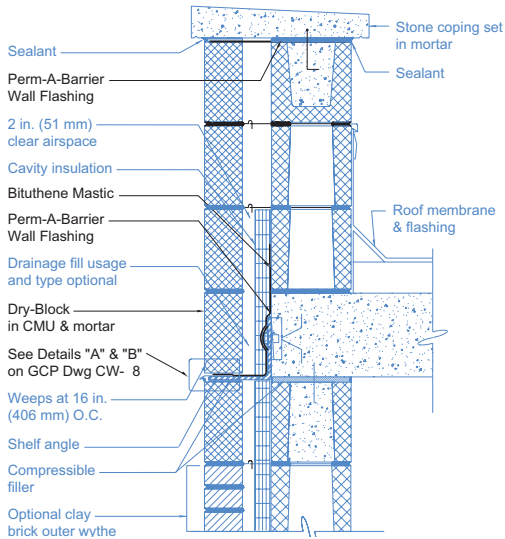


**CONTINUOUS FLASHING**

At inside and outside corners, fold and lap seams. Seal top edge & corner lap seams with a bead of Bituthene Mastic or S100 Sealant

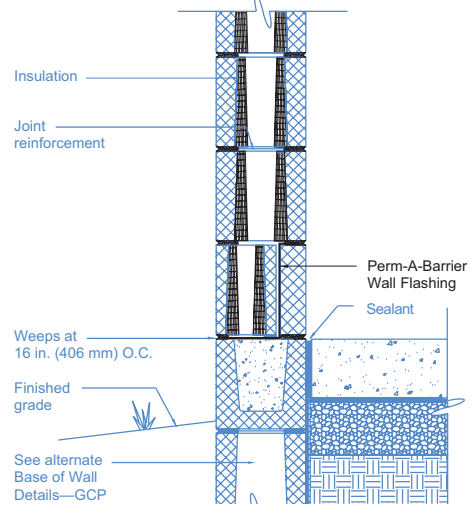


**Through-wall Flashing Details**

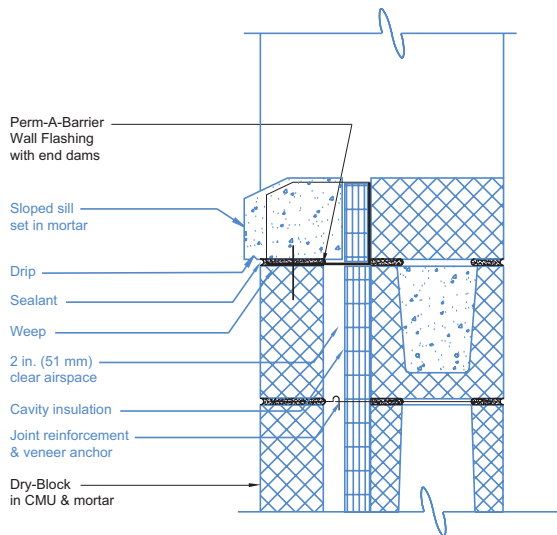


**Parapet Detail**

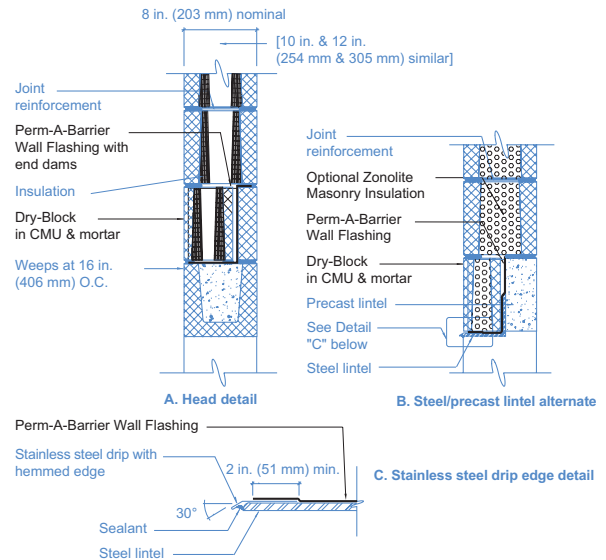
**Perm-A-Barrier Flashing Details at Inside and Outside Corners**



**Base of Wall Detail**



**Sill Detail**



**Masonry Opening Head Flashing**

## Supply

Product	Unit of Sale	Approximate Coverage	Weight	Palletization
<b>Perm-A-Barrier Wall Flashing</b>				
—12 in. (305 mm)	3 rolls	75 linear ft per roll	22.5 lbs/roll	25 cartons (75 rolls) per pallet
—18 in. (457 mm)	2 rolls	75 linear ft per roll	33.7 lbs/roll	25 cartons (50 rolls) per pallet
—24 in. (610 mm)	1 roll	75 linear ft per roll	49.7 lbs/roll	35 cartons (35 rolls) per pallet
—36 in. (914 mm)	1 roll	75 linear ft per roll	67.7 lbs/roll	25 cartons (25 rolls) per pallet
<b>Bituthene Mastic—5 gal pail</b>	1 pail	approx. 120 ft <sup>2</sup> at 60 mils	54 lbs/pail	36 pails per pallet
<b>Bituthene Mastic—30 oz tube</b>	12 tubes	approx. 30 linear ft x 1/4 in. bead	32 lbs/carton	72 cartons (864 tubes) per pallet
<b>S100 Sealant—29 oz. Cartridge</b>	1 cartridge	approx. 30 linear ft x 1/4 in. bead	29 oz. cartridge	10 cartridges/ carton 42 cartons/ pallet
<b>Bituthene Liquid Membrane—1.5 gal pail</b>	1 pail	approx. 200 Linear ft/gal @ 1" wide x 90 mils.	16 lbs/pail	100 pails per pallet
<b>Bituthene Liquid Membrane—4 gal pail</b>	1 pail	approx. 200 Linear ft/gal @ 1" wide x 90 mils.	44 lbs/pail	24 pails per pallet
<b>Perm-A-Barrier Primer Plus—5 gal pail</b>	1 pail	450–500 ft <sup>2</sup> /gal (11–12 m <sup>2</sup> /L)	43 lbs/pail	36 pails per pallet
<b>Perm-A-Barrier WB Primer—5 gal pail</b>	1 pail	250–350 ft <sup>2</sup> /gal (6–8 m <sup>2</sup> /L)	45 lbs/pail	32 pails per pallet

## Physical Properties

Property	Typical Value	Test Method
Color	Green with repeated logo imprint	
Thickness	40 mil (1 mm)	ASTM D3767, method A
Low temperature flexibility	Unaffected at -45 °F (-43 °C)	ASTM D1970
Tensile strength, membrane	1200 psi (8300 kPa) minimum	ASTM D412, Die C modified
Elongation, ultimate failure of rubberized asphalt	200% minimum	ASTM D412
Lap adhesion at minimum application temperature	60 lbs/ft (875 N/m) width	ASTM D1876 modified
Adhesion to concrete at minimum application temperature	60 lbs/ft (875 N/m) width	ASTM D903
Puncture resistance, membrane	40 lbs (178 N) minimum MD	ASTM D781
	80 lbs (356 N) minimum MD	ASTM E154
Tear resistance, initiation	13 lbs (58 N) minimum MD	ASTM D1004
Tear resistance, propagation	9 lbs (40 N) minimum MD	ASTM D1938
Permeance	0.05 perms (2.9 ng/m <sup>2</sup> sPa) maximum	ASTM E96, method B
Water absorption	0.1% maximum	ASTM D570

## Limitations

Perm-A-Barrier Wall Flashing must not be applied in areas where it will be exposed to sunlight permanently and must be covered within a reasonable amount of time, not to exceed 60 days. Refer to Technical Letter 19, *Exposure Guidelines for Perm-A-Barrier Self-Adhered Membranes*.

Perm-A-Barrier Wall Flashing and all other Perm-A-Barrier self-adhered membranes should not be applied over S100 Sealant.

## Warranty

Perm-A-Barrier products are warranted to be free of defects in manufacture for a period of 5 years. Material will be provided at no charge to replace any defective product.

## Technical Service

Support is provided by full-time technically trained GCP field sales representatives and technical service personnel, backed by a central research and development technical services staff.

[gcpat.com](http://gcpat.com) | Customer Service: 1-866-333-3726

We hope the information here will be helpful. It is based on data and knowledge considered to be true and accurate, and is offered for consideration, investigation and verification by the user, but we do not warrant the results to be obtained. Please read all statements, recommendations, and suggestions in conjunction with our conditions of sale, which apply to all goods supplied by us. No statement, recommendation, or suggestion is intended for any use that would infringe any patent, copyright, or other third party right.

Perm-A-Barrier, Bituthene, Ripcord, Dry-Block and Vycor are trademarks, which may be registered in the United States and/or other countries, of GCP Applied Technologies Inc. This trademark list has been compiled using available published information as of the publication date and may not accurately reflect current trademark ownership or status. DensGlass Gold is a registered trademark of Georgia-Pacific Corporation.

© Copyright 2017 GCP Applied Technologies Inc. All rights reserved.

GCP Applied Technologies Inc., 62 Whittemore Avenue, Cambridge, MA 02140 USA.

In Canada, 294 Clements Road, West, Ajax, Ontario, Canada L1S 3C6.

GCP0083

PAB-050-1217

Distributed by:  
**MasonAccess.com**  
 (800) 924-6802

